

GUARANTEE & LIABILITY

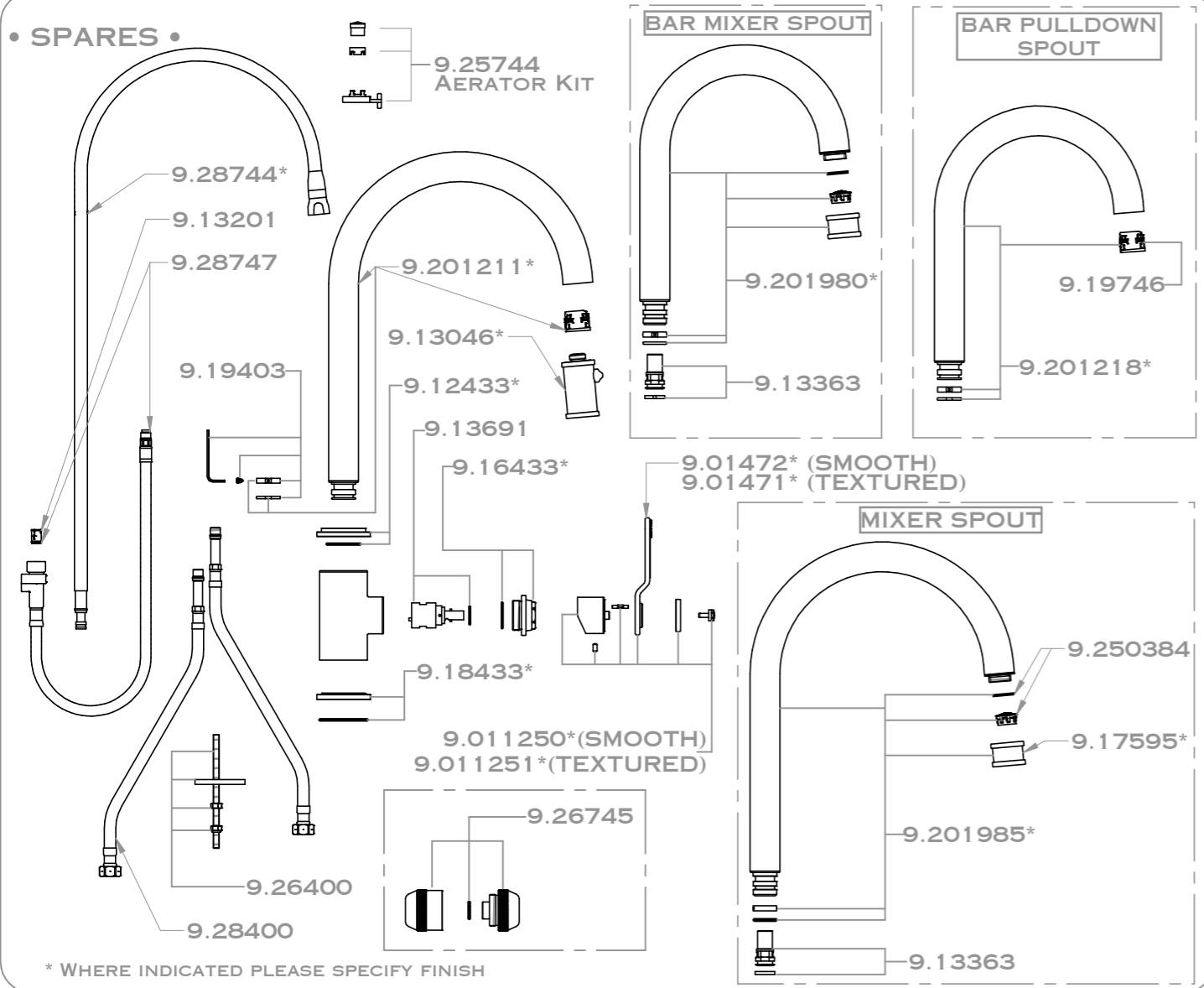
YOUR PERRIN & ROWE PRODUCT HAS BEEN MANUFACTURED TO EXACTING STANDARDS. HOWEVER, IN THE UNLIKELY EVENT THAT YOU SHOULD EXPERIENCE ANY DEFECT, THE FOLLOWING GUARANTEES WILL APPLY:

YOUR PERRIN & ROWE PRODUCT IS GUARANTEED AGAINST ANY MECHANICAL DEFECT WITHIN FIVE YEARS OF THE DATE OF PURCHASE. SHOULD A FAULT OCCUR; A FREE REPLACEMENT PART WILL BE ISSUED. IN THE EVENT THAT THIS DOES NOT RESOLVE THE DEFECT, A REPLACEMENT PRODUCT WILL BE SUPPLIED. THE SURFACE FINISH OF PERRIN & ROWE PRODUCTS ARE GUARANTEED FOR ONE YEAR FROM THE DATE OF PURCHASE. THIS IS PROVIDED OUR CARE AND MAINTENANCE INSTRUCTIONS HAVE BEEN FOLLOWED AND THAT NO SCOURING OR AGGRESSIVE CLEANING AGENTS HAVE BEEN USED.

THIS DOES NOT AFFECT YOUR STATUTORY RIGHTS.

FOR FULL TERMS AND CONDITIONS PLEASE CONTACT YOUR LOCAL DISTRIBUTOR.

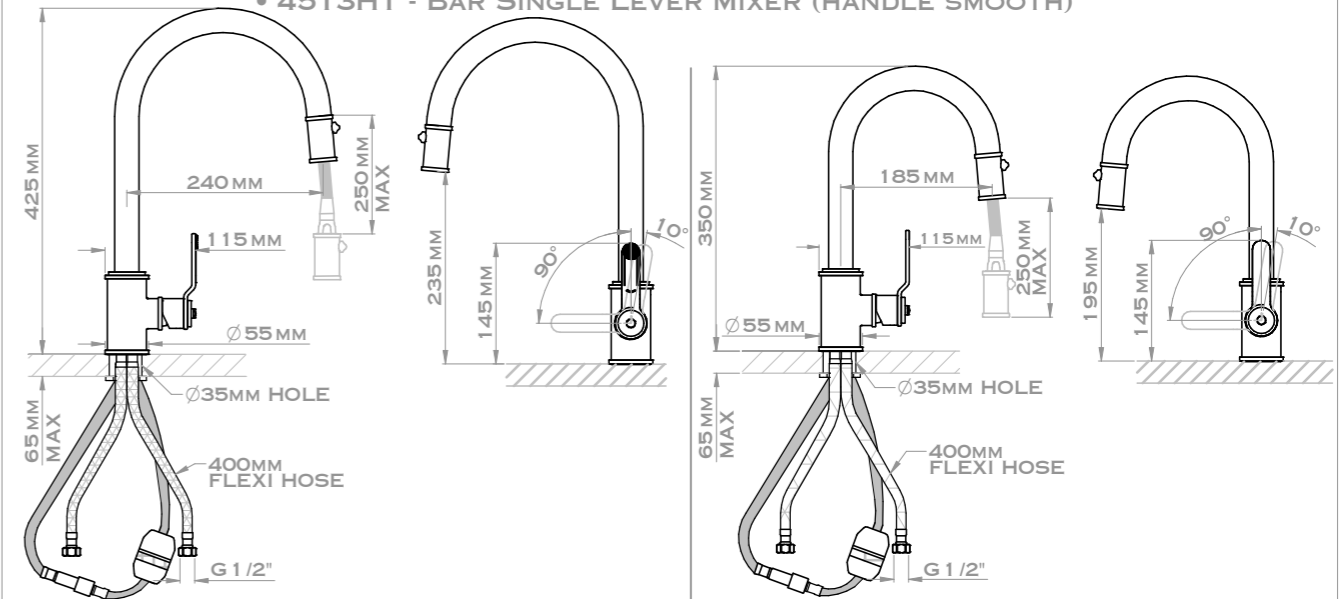
• SPARES •



PERRIN & ROWE[®]
MAYFAIR LONDON

• THE INDUSTRIAL KITCHEN COLLECTION • INSTALLATION & USER GUIDE

- 4544HT - SINGLE LEVER PULL DOWN (HANDLE TEXTURED)
- 4544HS - SINGLE LEVER PULL DOWN (HANDLE SMOOTH)
- 4543HT - BAR PULL DOWN (HANDLE TEXTURED)
- 4543HS - BAR PULL DOWN (HANDLE SMOOTH)
- 4512HT - SINGLE LEVER MIXER (HANDLE TEXTURED)
- 4512HS - SINGLE LEVER MIXER (HANDLE SMOOTH)
- 4513HT - BAR SINGLE LEVER MIXER (HANDLE TEXTURED)
- 4513HT - BAR SINGLE LEVER MIXER (HANDLE SMOOTH)



TEMP RANGE:
MIN (1°C) 34°F
MAX (70°C) 158°F

RECOMMENDED
WORKING PRESSURE:
MIN 1BAR (15PSI)
MAX 5BAR (72PSI)

IDEAL PERFORMANCE OBTAINED WITH EQUAL HOT & COLD PRESSURES.

SPARE PARTS & SERVICE

PERRIN & ROWE[®]
MAYFAIR LONDON

PHONE: 01708 526 361

ENQUIRIES@PERRINANDROWE.CO.UK
WWW.PERRINANDROWE.CO.UK

PERRIN & ROWE PRODUCTS ARE MANUFACTURED IN ENGLAND USING QUALITY MATERIALS, THE LATEST TECHNOLOGY AND BUILT TO THE HIGHEST STANDARDS.

WE WOULD LIKE TO THANK YOU FOR PURCHASING THIS PERRIN & ROWE PRODUCT AND INVITE YOU TO VIEW THE COMPREHENSIVE RANGE OF PERRIN & ROWE TAPWARE, SHOWER FITTINGS, BATHROOM ACCESSORIES, SOAP DISPENSERS AND BATHROOMWARE.

PLEASE CONTACT US TO RECEIVE OUR LATEST PRODUCT CATALOGUES OR VIEW THEM ONLINE AT WWW.PERRINANDROWE.CO.UK

CONGRATULATIONS ON THE PURCHASE OF YOUR PERRIN AND ROWE KITCHEN PRODUCT. CORRECTLY INSTALLED AND WITH SENSIBLE CARE, THIS PRODUCT WILL GIVE YOU MANY YEARS OF TROUBLE FREE SERVICE.

• IMPORTANT INFORMATION •

PLEASE READ CAREFULLY TO ENSURE CORRECT INSTALLATION. BEFORE YOU PROCEED... WE RECOMMEND YOU ENGAGE THE SERVICES OF A REGISTERED PLUMBER TO INSTALL THIS PRODUCT.

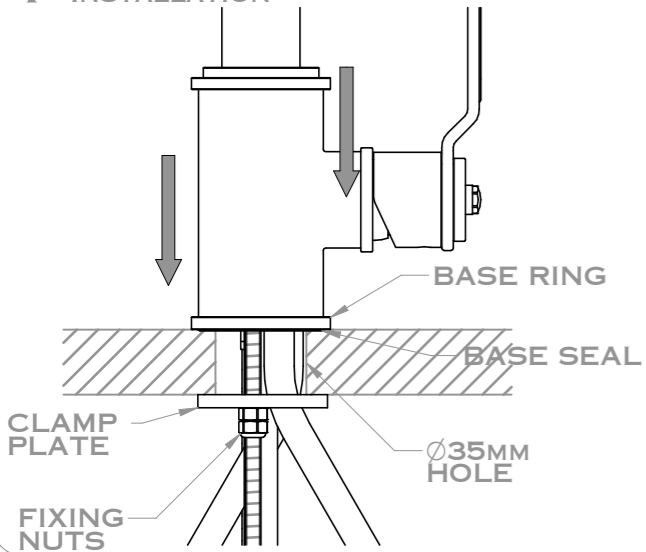
FOR EASE OF POSSIBLE FUTURE SERVICING, WE ALSO RECOMMEND THE FITTING OF CONVENIENTLY PLACED ISOLATING VALVES.

• PREPARATION CHECK BOX FOR INSTALLER •

FLUSH THE PLUMBING SYSTEM BEFORE INSTALLING THE KITCHEN PRODUCT.

ONCE UNPACKED REMOVE BASE RING/SEAL, PULLDOWN WAND, CLAMP PLATE, FIXING NUTS & WEIGHT READY FOR INSTALLATION.

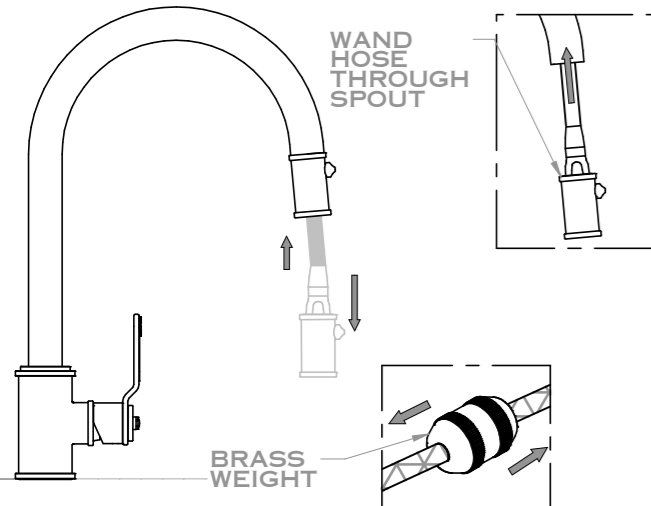
1 INSTALLATION



- AFTER REMOVING FIXING NUTS & CLAMP PLATE ON TAP, FEED ALL X3 HOSES THROUGH WORKTOP HOLE (Ø35MM)
- ENSURE THE BASE SEAL IS IN POSITION BETWEEN BASE RING AND WORKTOP. ENSURE THE TAP IS ORIENTATED TO THE DESIRED POSITION AND THAT THERE IS NO OBSTRUCTION WHEN THE LEVER IS IN USE.
- SECURE TAP WITH BOX SPANNER SUPPLIED, ENSURE THE PULL DOWN WAND HOSE CAN RUN FREE. STORE SPANNER IN SAFE PLACE FOR FUTURE SERVICING.

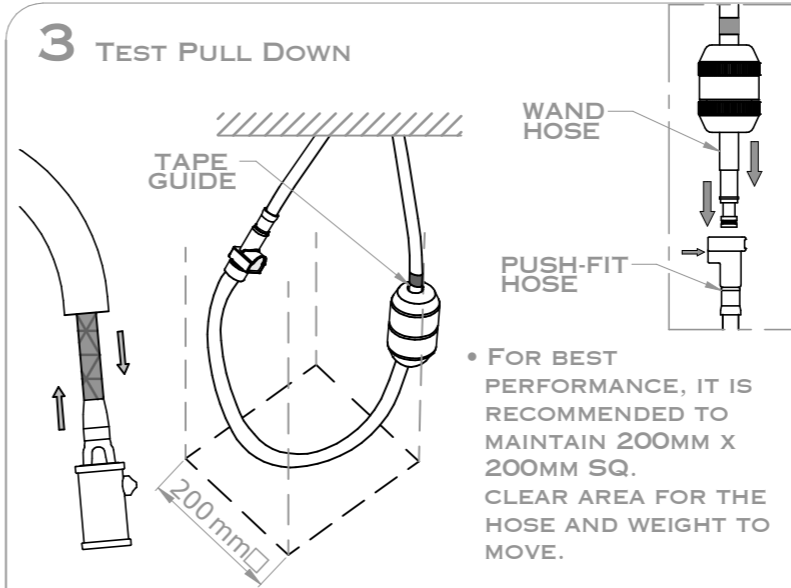
PLEASE NOTE: THE RUBBER BASE SEAL IS AN ESSENTIAL ITEM AND MUST BE FITTED TO THE UNDERSIDE OF THE TAP BASE RING.

2 INSTALLATION CONT.



- PLEASE REFER TO THE FRONT IMAGE FOR DIMENSIONAL POSITIONING OF PULL DOWN TAP ON WORKTOP.
- FEED THE PULL DOWN HOSE THROUGH THE SPOUT AND EXIT UNDERNEATH THE WORKTOP. LOOSEN THE BRASS WEIGHT BY UNSCREWING THE 2-HALVES - DO NOT COMPLETELY UNSCREW.
- SLIDE HOSE THROUGH BRASS WEIGHT AND SECURE TOGETHER BY SCREWING TIGHT THE 2-HALVES OF THE BRASS WEIGHT TOGETHER.
- THE RECOMMENDED POSITION TO ATTACH THE WEIGHT IS SHOWN WITH A TAPE GUIDE. CHECK IF THE REACH OF THE PULL DOWN IS SUFFICIENT / ADJUST TO SUIT.
- ENSURE THAT THE BRASS WEIGHT DOES NOT INTERFERE WITH OTHER HOSES OR ANY OTHER OBSTRUCTIONS, AND IS FREE TO MOVE WHEN IN USE.

3 TEST PULL DOWN

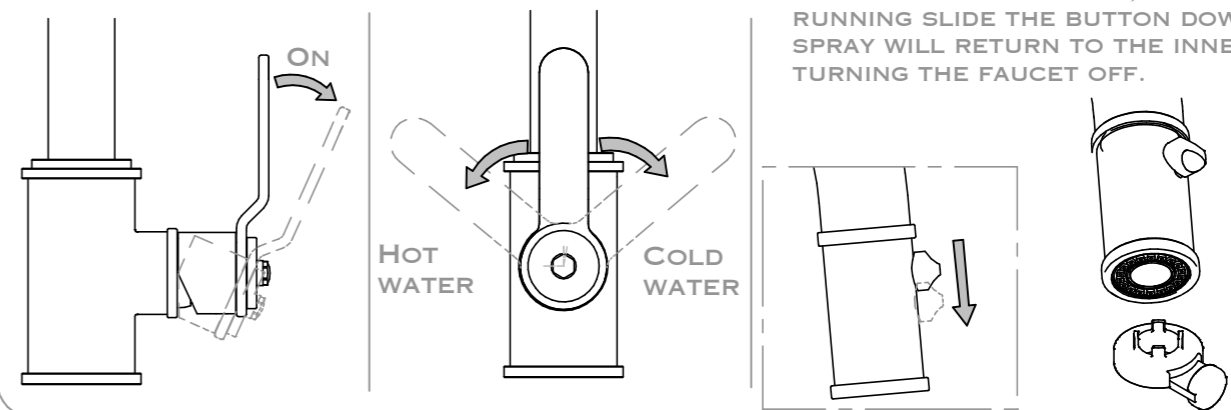


• FOR BEST PERFORMANCE, IT IS RECOMMENDED TO MAINTAIN 200MM X 200MM SQ. CLEAR AREA FOR THE HOSE AND WEIGHT TO MOVE.

- ENSURE BRASS WEIGHT IS IN POSITION ON PULLDOWN HOSE. PUSH THE PULL DOWN HOSE INTO THE PUSH-FIT HOSE AS SHOWN.
- ENSURE THERE IS AMPLE ROOM IN THE SPACE UNDER THE WORK SURFACE FOR THE HOSES AND WEIGHT TO MOVE FREELY. TEST THAT THE SPRAY HEAD EXTENDS FAR ENOUGH BY PULLING IT OUT.
- THE WAND SHOULD RETRACT SMOOTHLY AND RETURN BACK TO IT'S PRIMARY POSITION COMFORTABLY.
- CONNECT HOT & COLD WATER SUPPLIES. FOR EASE OF SERVICING IT IS RECOMMENDED THAT ISOLATION VALVES BE FITTED TO WATER SUPPLIES. TAKE CARE IN ENSURING THE FLEXIBLE HOSES ARE INSTALLED WITHOUT KINKS OR TWISTS.

ENSURE ALL CONNECTIONS ARE FIRMLY TIGHTENED.

4 OPERATION



- TO CHANGE THE FLOW OF WATER FROM THE INNER JET TO THE OUTER SPRAY, WITH THE WATER RUNNING SLIDE THE BUTTON DOWNWARDS. THE SPRAY WILL RETURN TO THE INNER JET AFTER TURNING THE FAUCET OFF.

• ENSURE AERATOR KEY IS PASSED TO CONSUMER, FOR SERVICE PURPOSES.

• BEFORE USE •

- CAREFULLY CHECK THE INSTALLATION FOR LEAKS.
- IF FURTHER BUILDING WORK IS TO BE CARRIED OUT IN THE VICINITY, COVER THE PRODUCT TO AVOID DAMAGING THE FINISH.
- PLEASE ENSURE THAT THE INSTALLATION COMPLIES WITH LOCAL PLUMBING CODES.

• CARE & MAINTENANCE •

- WIPE DOWN AFTER USE TO AVOID WATER SPOTTING AND MINERAL BUILD UP.
- OCCASIONAL CLEANING WITH WARM SOAPY WATER, FOLLOWED BY WIPING WITH A SOFT CLOTH IS ALL THAT IS REQUIRED TO KEEP THE PLATED FINISH IN GOOD CONDITION.
- DO NOT USE PROPRIETARY ABRASIVE LIQUIDS, POWDERS, OR PADS TO CLEAN THE PRODUCT. DO NOT USE ANY PRODUCTS WITH AMMONIA BLEACH OR LIMESCALE REMOVER. YOU WILL DAMAGE THE PLATED FINISH AND VOID YOUR WARRANTY.