

Product Finish: Brushed Nickel

Product code: AT2116  
EAN13 barcode: 5060344158565



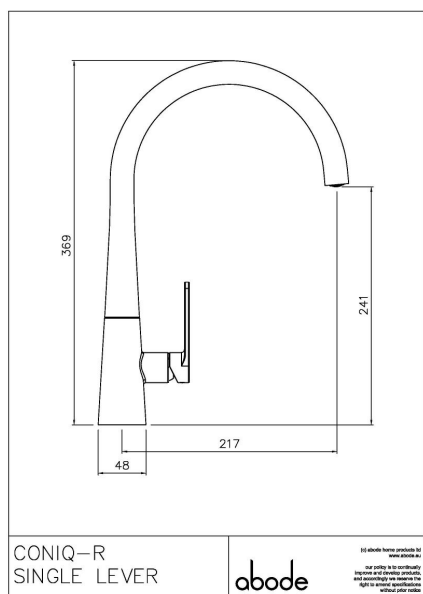
Note: the image shown may not reflect the product finish, chrome finish is typically depicted.

## Product features:

- Metal construction throughout
- Supplied complete with flexible tail pipes for fast simple fitting
- Single lever control for effortless single handed control
- Antisplash spout supplied as standard
- Subtle soft sweeping design form

## Additional information / Parts included:

## Product dimensions:



- **Overall Height / projection:** 369 mm
- **Exit reach:** 217 mm
- **Exit height:** 241 mm
- **Centre distance(s):**

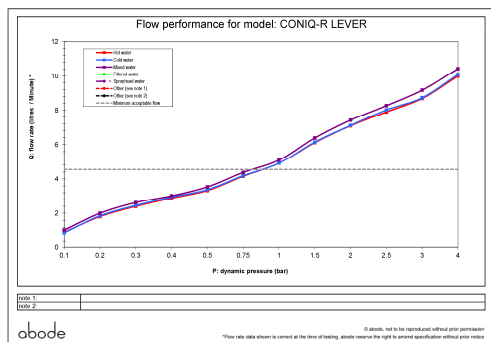
- **Base diameter(s):** 48 mm
- **Recommended hole diameter:** Ø 35 mm
- **Max. surface depth:** 50 mm

- **Spout diameter:** 24 mm
- **Spout aerator size:** M21.5 x 1

## Packaged properties:

- Box length:** 440mm
- Box depth:** 70mm
- Box width:** 340mm
- Units per outer:** 5
- Tap only weight:** 1.12kg
- Boxed weight:** 1.88kg

## Product flow characteristics:



- **Min / Max water pressure:** 0.80 / 5.5 bar
- **Recommended / Max water temperature:** 46°C / 70°C
- **Part G - Mixed flow rate at 3 bar (litres / min):** 09.18

- **Control valve type:** Single lever ceramic cartridge
- **Product flow characteristics:** Single flow
- **Non return valve(s):** Integral to hot & cold inlets

- **Aerator type:** Honeycomb coin slot aerator
- **Accepts revolve / spray areator:** No
- **Spout connection method:** Grub screw (2.5mm)

- **Tail pipe inlet / outlet size:** M10 / 1/2" BSP Male
- **Inlet pipe type / length:** Flexible stainless braided hose / 365 mm

## Care instructions summary:

- Clean the mixers and showers regularly as required, using soap, do not use any other cleaners.
- Regular cleaning will prevent the build-up of lime scale and dirt
- After cleaning rinse thoroughly with clean water to remove any cleaner residue
- Residues of sink & worktop cleaners can also cause damage, so rinse with clean water after using, avoid contact with any abrasives

## Warranty Summary (Full details available on request):

- Materials and workmanship defects warranted for 5 years
- Valves and working parts warranted for 5 years
- Surface warranty defects warranted for 1 year
- O-rings, hoses & gaskets warranted for 1 year