

Product Finish: Brushed Nickel

Product code: AT2135
EAN13 barcode: 5060344159104



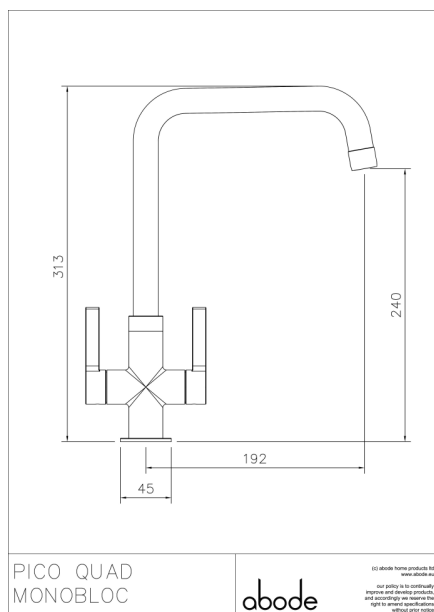
Note: the image shown may not reflect the product finish, chrome finish is typically depicted.

Product features:

- Metal construction throughout
- Quarter turn handle action for precise flow control
- Minimalist planate design form
- Antisplash spout supplied as standard
- Supplied complete with flexible tail pipes for fast simple fitting

Additional information / Parts included:

Product dimensions:

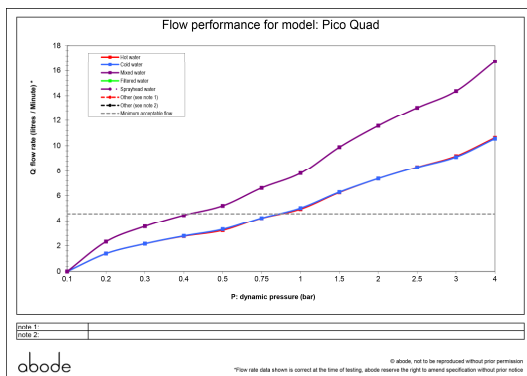


- **Overall Height / projection:** 313 mm
- **Exit reach:** 192 mm
- **Exit height:** 240 mm
- **Centre distance(s):**
- **Base diameter(s):** 45 mm
- **Recommended hole diameter:** Ø 35 mm
- **Max. surface depth:** 45 mm
- **Spout diameter:** 22 mm
- **Spout aerator size:** M22x1 M

Packaged properties:

- Box length:** 435mm
- Box depth:** 70mm
- Box width:** 340mm
- Units per outer:** 5
- Tap only weight:** 0.83kg
- Boxed weight:** 1.40kg

Product flow characteristics:



- **Min / Max water pressure:** 0.40 / 5.5 bar
- **Recommended / Max water temperature:** 46°C / 70°C
- **Part G - Mixed flow rate at 3 bar (litres / min):** 14.36

- **Control valve type:** Ceramic disc QT
- **Product flow characteristics:** Single flow
- **Non return valve(s):** Integral to hot & cold inlets

- **Aerator type:** Honeycomb Aerator
- **Accepts revolve / spray areator:** Yes
- **Spout connection method:** Spout locking collar

- **Tail pipe inlet / outlet size:** M10 / 1/2" BSP Male
- **Inlet pipe type / length:** flexible stainless braided hose / 370 mm

Care instructions summary:

- Clean the mixers and showers regularly as required, using soap, do not use any other cleaners.
- Regular cleaning will prevent the build-up of lime scale and dirt
- After cleaning rinse thoroughly with clean water to remove any cleaner residue
- Residues of sink & worktop cleaners can also cause damage, so rinse with clean water after using, avoid contact with any abrasives

Warranty Summary (Full details available on request):

- Materials and workmanship defects warranted for 5 years
- Valves and working parts warranted for 5 years
- Surface warranty defects warranted for 1 year
- O-rings, hoses & gaskets warranted for 1 year