

Product Finish: Brushed Nickel

Product code: AT2165
EAN13 barcode: 5060344159784



Note: the image shown may not reflect the product finish, chrome finish is typically depicted.

Product features:

Metal & ABS construction

Quarter turn handle action for precise flow control

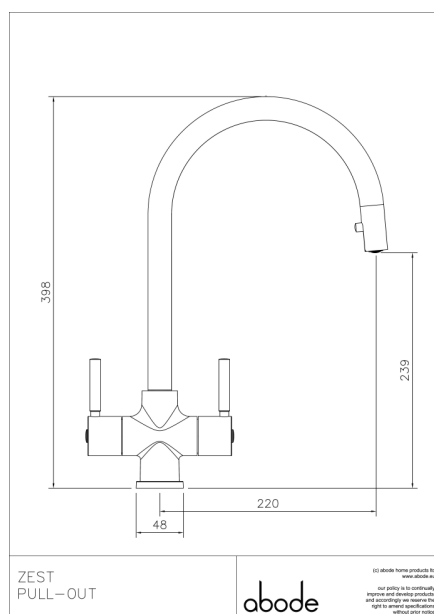
Supplied complete with flexible tail pipes for fast simple fitting

Pull out hose spout head

Freshly designed contemporary blend

Additional information / Parts included:

Product dimensions:



- **Overall Height / projection:** 398 mm
- **Exit reach:** 220 mm
- **Exit height:** 239 mm
- **Centre distance(s):**

- **Base diameter(s):** 48 mm
- **Recommended hole diameter:** Ø 35 mm
- **Max. surface depth:** 60 mm

- **Spout diameter:** 24 mm
- **Spout aerator size:** M18

Packaged properties:

Box length: 435mm

Box depth: 70mm

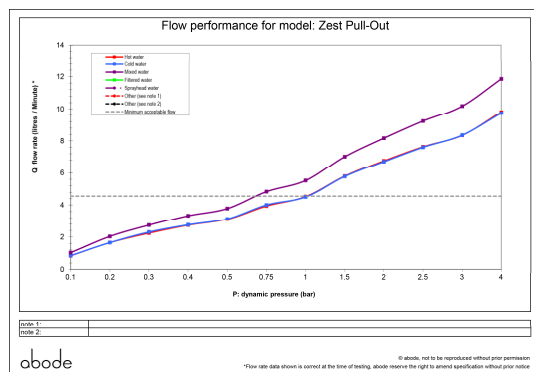
Box width: 340mm

Units per outer: 5

Tap only weight: 2.43kg

Boxed weight: 3.00kg

Product flow characteristics:



- **Min / Max water pressure:** 0.75 / 5.5 bar
- **Recommended / Max water temperature:** 46°C / 70°C
- **Part G - Mixed flow rate at 3 bar (litres / min):** 10.18

- **Control valve type:** Ceramic disc QT
- **Product flow characteristics:** Single flow
- **Non return valve(s):** 1 x NRV in spray head

- **Aerator type:** Honeycomb coin slot aerator
- **Accepts revolve / spray areator:** No
- **Spout connection method:** Grub screw

- **Tail pipe inlet / outlet size:** M10 / 1/2" BSP Female
- **Inlet pipe type / length:** flexible stainless braided hose / 370 mm

Care instructions summary:

- Clean the mixers and showers regularly as required, using soap, do not use any other cleaners.
- Regular cleaning will prevent the build-up of lime scale and dirt
- After cleaning rinse thoroughly with clean water to remove any cleaner residue
- Residues of sink & worktop cleaners can also cause damage, so rinse with clean water after using, avoid contact with any abrasives

Warranty Summary (Full details available on request):

- Materials and workmanship defects warranted for 5 years
- Valves and working parts warranted for 5 years
- Surface warranty defects warranted for 1 year
- O-rings, hoses & gaskets warranted for 1 year