

Product Finish: Nude

Product code: AT2209  
EAN13 barcode: 5060879991934



Note: the image shown may not reflect the product finish, chrome finish is typically depicted.

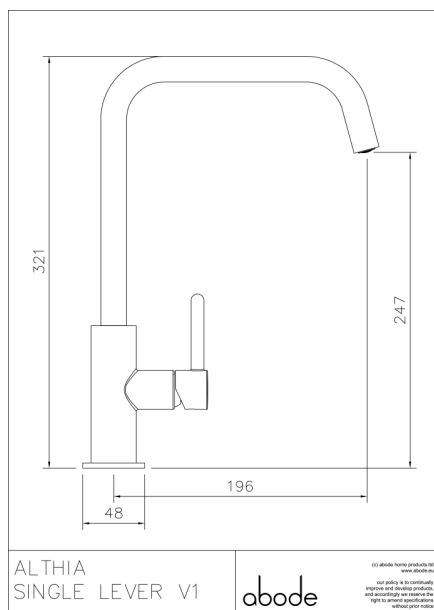
## Product features:

- Grey nylon spout hose for stylish durability
- Innovative progressive control valve design
- Subtle soft sweeping design form
- Luscious European quality chromium plate finish
- Supplied with copper tail pipes for maximum stability and flow

## Additional information / Parts included:

Triangular stabiliser -sco06091 kit

## Product dimensions:



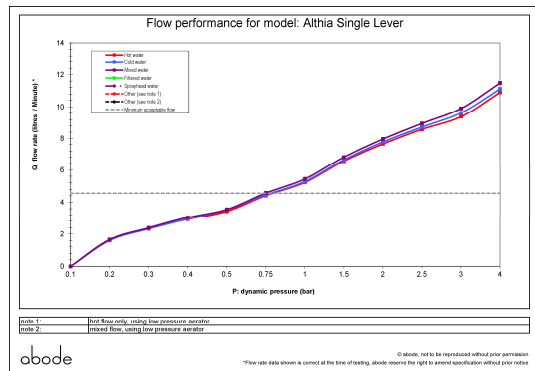
- Overall, Height / projection:** 321 mm
- Exit reach:** 196 mm
- Exit height:** 247 mm
- Centre distance(s):**
- Base diameter(s):** 48 mm
- Recommended hole diameter:** Ø 37 mm
- Max. surface depth:** 50 mm

- Spout diameter:** 22 mm
- Spout aerator size:** M16.5 x3

## Packaged properties:

- Box length:** 435mm
- Box depth:** 70mm
- Box width:** 340mm
- Units per outer:** 5
- Tap only weight:** 0.71kg
- Boxed weight:** 1.42kg

## Product flow characteristics:



- Min / Max water pressure:** 0.75 / 5.50 bar
- Recommended / Max water temperature:** 46°C / 70°C
- Part G - Mixed flow rate at 3 bar (litres / min):** 09.90

- Control valve type:** Single lever ceramic cartridge
- Product flow characteristics:** Single flow
- Non return valve(s):** Integral to hot & cold inlets

- Aerator type:** Honeycomb coin slot aerator
- Accepts revolve / spray areator:** No
- Spout connection method:** Grub screw

- Tail pipe inlet / outlet size:** M12 / 1/2" BSP Male
- Inlet pipe type / length:** flexible stainless braided hose / 367 mm

## Care instructions summary:

- Clean the mixers and showers regularly as required, using soap, do not use any other cleaners.
- Regular cleaning will prevent the build-up of lime scale and dirt
- After cleaning rinse thoroughly with clean water to remove any cleaner residue
- Residues of sink & worktop cleaners can also cause damage, so rinse with clean water after using, avoid contact with any abrasives

## Warranty Summary (Full details available on request):

- Materials and workmanship defects warranted for 5 years
- Valves and working parts warranted for 5 years
- Surface warranty defects warranted for 1 year
- O-rings, hoses & gaskets warranted for 1 year