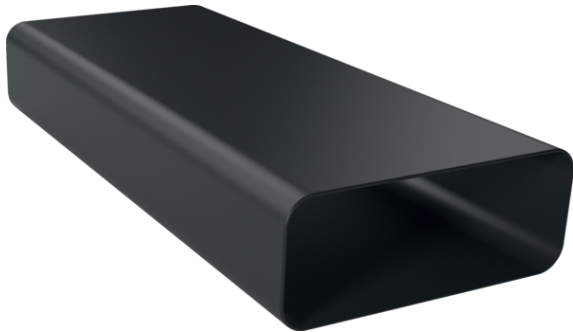


Flat duct, 1000 mm, Black HZ9VDSM2



Features

Technical Data

Dimensions of the packed product (HxWxD) : 98 x 235 x 1030

Pallet dimensions : 175.0 x 80.0 x 120.0

Standard number of units per pallet : 48

Net weight : 1.7

Gross weight : 2.0

EAN code : 4242003890660



Flat duct, 1000 mm, Black HZ9VDSM2

Features

- # Straight flat-duct tube element (1,000mm. male)
- # Aerodynamically optimized for minimised pressure losses and maximised flow rate. Easy-to-cut & easy-to-connect via the female connector sleeve element.
- # The element complies with the Needle Flame Test (according to IEC 60695-11-5) & the V2 flammability class (according to UL94).

Flat duct, 1000 mm, Black HZ9VDSM2

Dimensioned drawings

measurements in mm

